

Geophysical Society of Pittsburgh

DATE: Tuesday, January 4th, 2011

PLACE: Radisson Hotel - Greentree
101 Radisson Drive, Pittsburgh, PA 15220
412-922-8400

TIME: 5:00 PM – Social Hour
6:00 PM – Dinner
7:00 PM – Speaker

COST: \$30.00

PAYMENT: Cash or Checks at the door. Please make checks payable to
“Geophysical Society of Pittsburgh”

DINNER OPTIONS:

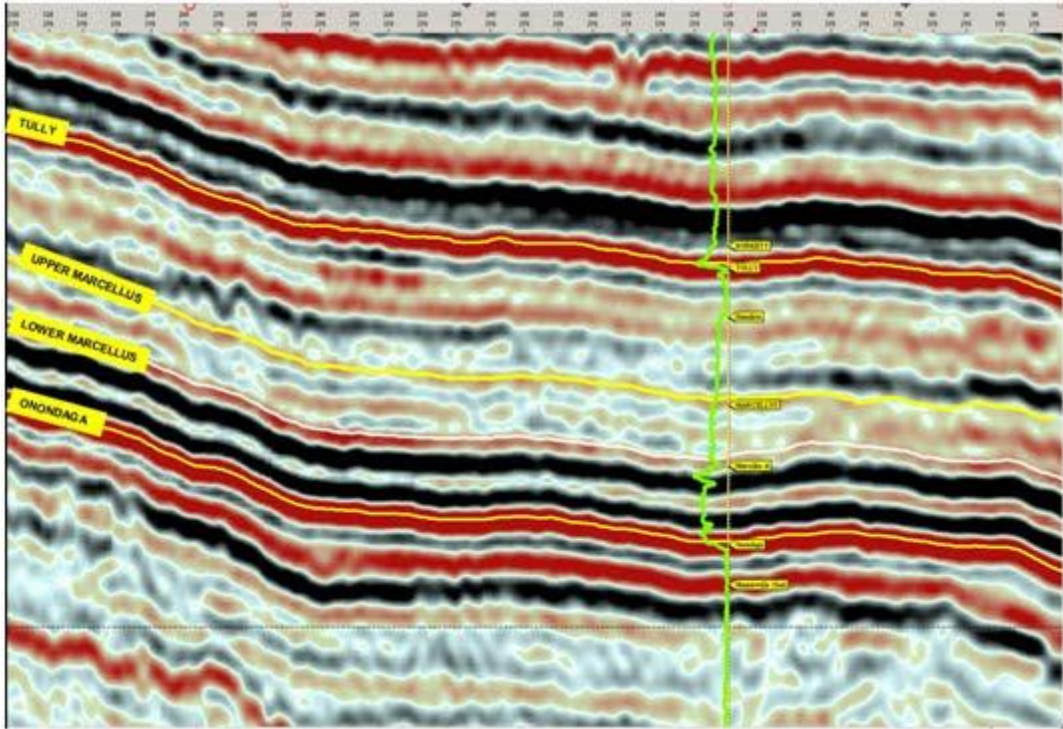
Breast of Chicken Scampi, Pan seared chicken with sauteed shrimp. Garlic in a lemon butter sauce, includes salad, bread, and dessert of Carrot Cake. Coffee, Tea, Decaf Coffee, Iced Tea.

Or

Roast Pork Loin, Herb Crusted with Apple Chutney, Chef’s Selection of Seasonal Vegetables, includes salad, bread, and dessert of Carrot Cake. Coffee, Tea, Decaf Coffee, Iced Tea.

With Double Chocolate Layer Cake for dessert.

RSVP by December 31th, to Mr. Philip Towey
(email:Philip.Towey@cabotog.com)



Presentation:

Oil and Gas Finders Unite!

Gary Perry

VP Reservoir Services, Geotrace

Your company is actively drilling wells in an area. The geophysicists can map time horizons using seismic and get good correlations with synthetic seismograms from pilot holes. The geologists have little problem in correlating wells in the zone of interest and the engineers have plenty of production data to analyze in the area.

The problem is, the time horizons may not be detailed enough to keep the bit in zone, the well log correlations aren't always right and the difference between great wells and mediocre wells might only be determined in hindsight. What can better be done to more easily predict great wells and exploit a play? The answer: combine the data used by geophysicists, geologists and engineers using modern methods to get a detailed picture of the lithology and fluids in the zone of interest and make more informed decisions.

The processes that help unite these disciplines include deriving rock properties from seismic and well data, azimuthal fracture analysis, microseismic integration and

reservoir simulation. Examples in several conventional and resource plays will be shown.

Biography

Gary Perry has been in the industry since 1974 and studied Geology with emphasis on Geophysics at the University of Texas during his early career. He is currently Vice President, Reservoir Services for Geotrace and has been with the company for over 24 years. Gary was previously with Geo-Search Corporation from 1974 to 1986 where he performed basin velocity studies in several onshore U.S. basins before going into seismic processing and then reservoir studies.